



# WARD VILLAGE.

HONOLULU, HI

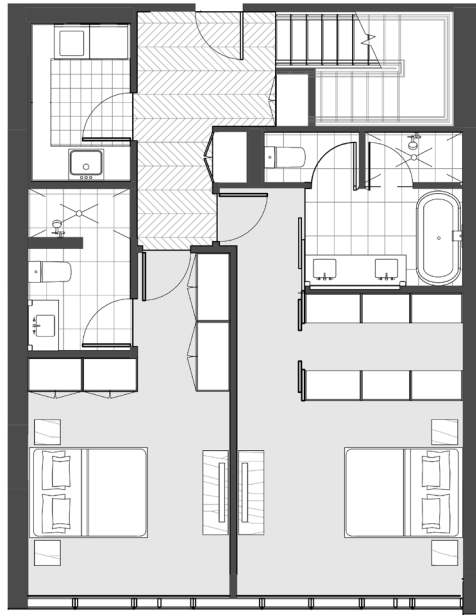
- ANAHA -  
1108 AUAHI

TOWNHOME C

LEVELS	UNITS
2-3	PTH-304, 305, 306

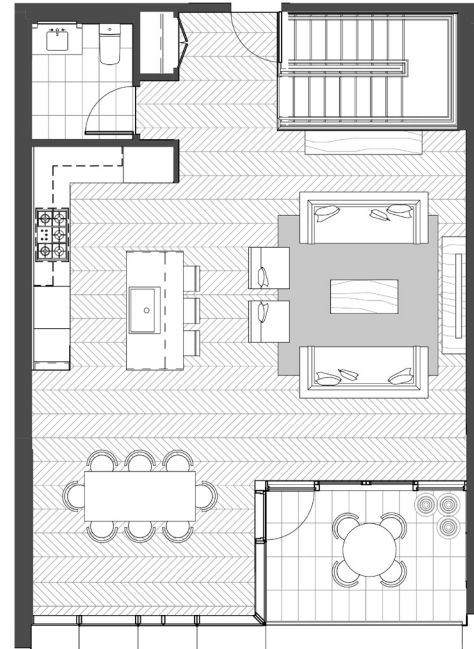
2 bedroom  
2.5 bathroom

Interior Size  
1,592-1,694 Sq Ft / 148-157 Sq M  
Lanai Size  
93 Sq Ft / 9 Sq M



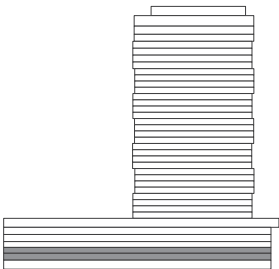
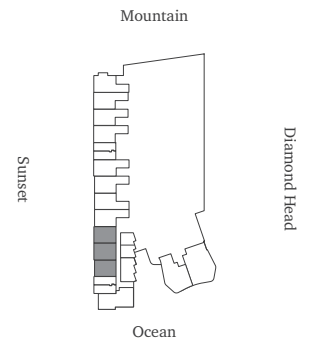
12'-0"      13'-5"  
3.7 m      4.1 m

Floor 2



13'-2"      12'-0"  
4.0 m      3.7 m

Floor 3



02-03

Scale: Not to scale. All dimensions are approximate.

### DISCLAIMER

Obtain the Property Report required by Federal law and read it before signing anything. No Federal agency has judged the merits or value, if any, of this property. Ward Village is a proposed planned master development in Honolulu, Hawai'i that does not yet exist. Photos and drawings and other visual depictions in this advertisement are for illustrative purposes only and do not represent the amenities or facilities in Ward Village and should not be relied upon in deciding to purchase or lease an interest in the development. The Developer makes no guarantee, representation or warranty whatsoever that the developments, facilities or improvements depicted will ultimately appear as shown. This is not intended to be an offering or solicitation of sale. Square footage figures for each residence shown herein are approximations and no representation is made as to the accuracy of such figures. Exclusive Project Broker Ward Village Properties LLC. Copyright © 2016.

Howard Hughes®

www.wardvillage.com