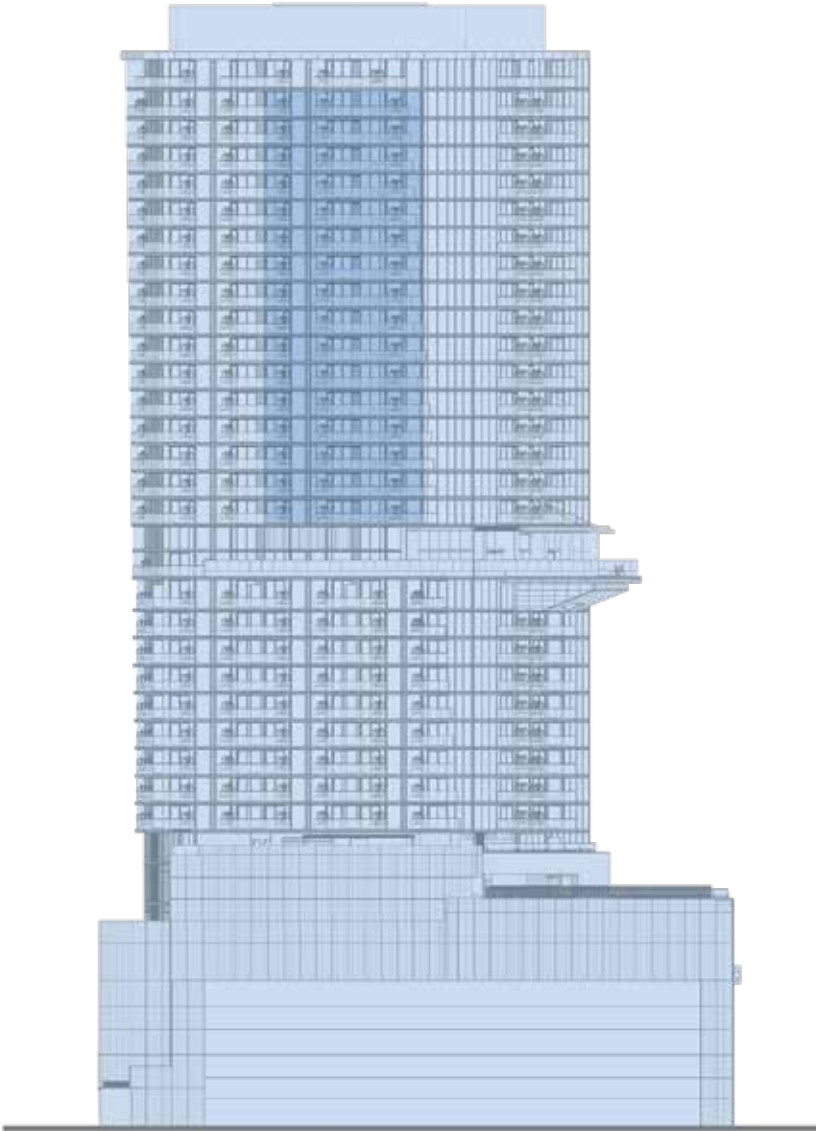


# Hale ‘Ōpua

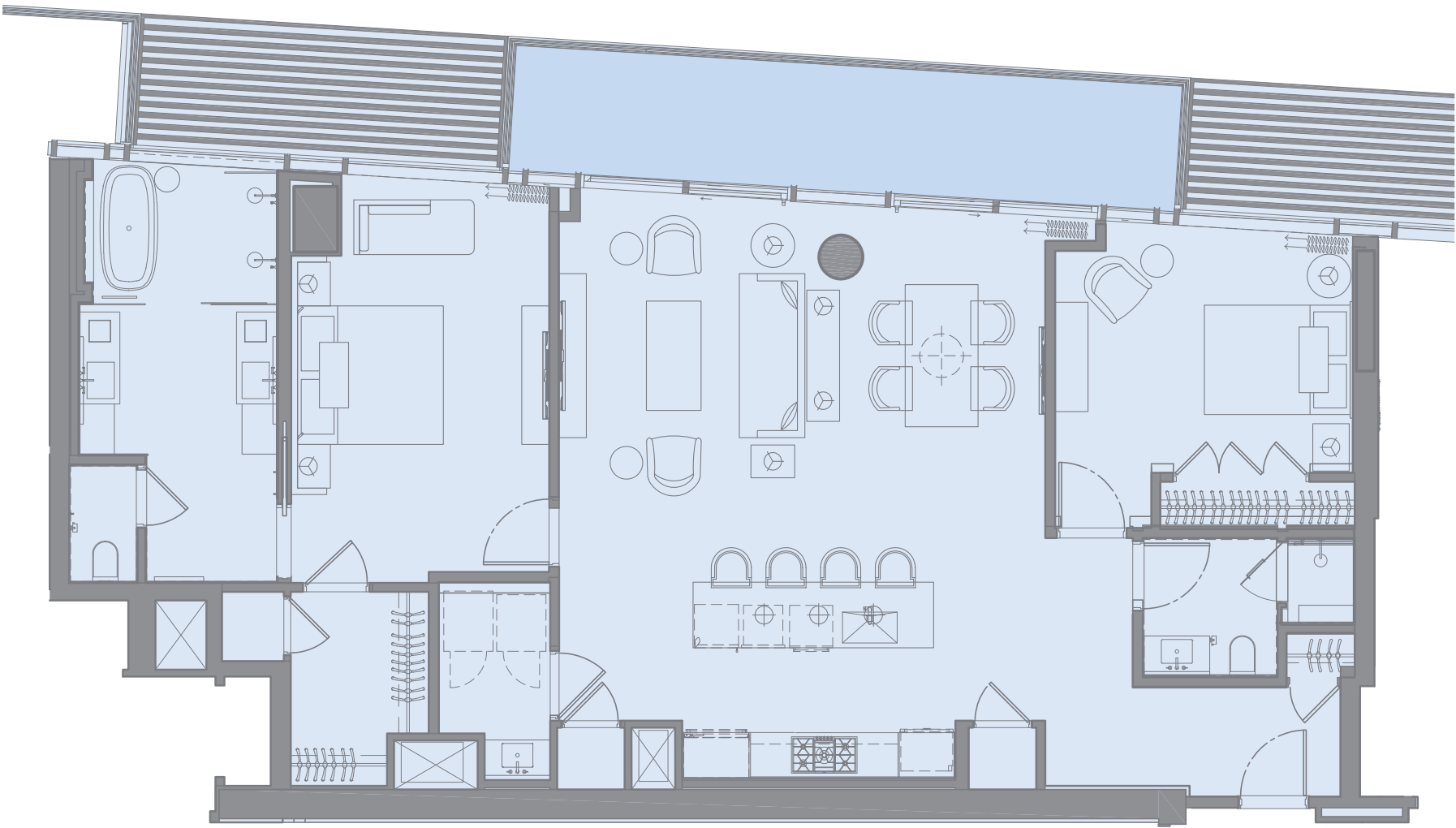
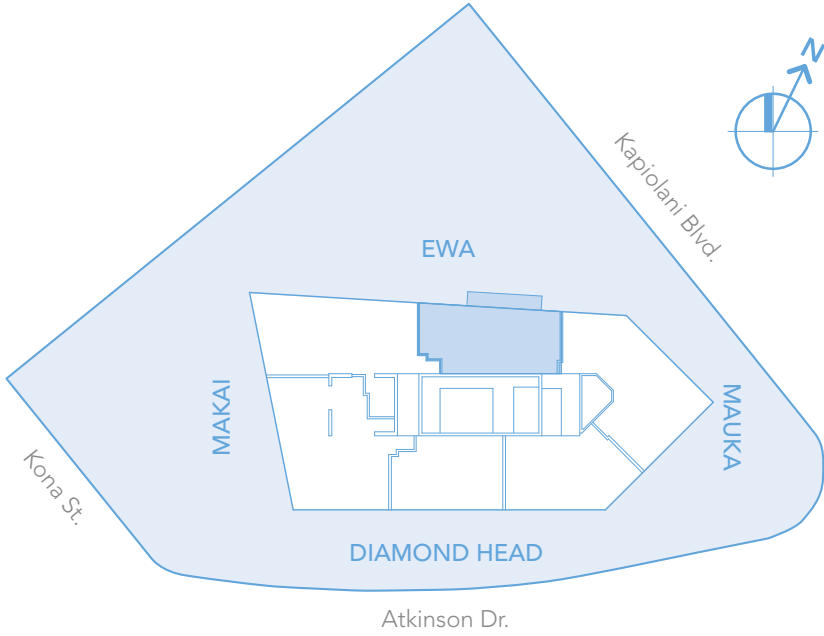
‘Ōpua, the Hawaiian word for “billowy clouds”, is the name given to these skybound residences for their spectacular Ewa-facing panoramas showcasing the verdant Ko’olau mountain range as well as Mount Ka’ala to the west, the highest peak on O’ahu. Within the exquisitely imagined interiors, spaces flow freely from one into the next, with natural light drawn from floor-to-ceiling glass, and gentle breezes coaxed from a spacious lanai off the living and dining areas.

## FLOORS 22 – 37

- 1,675 TOTAL SQ. FT.
- LIVING AREA 1,496 SQ. FT.
- LANAI AREA 179 SQ. FT.
- 2 BEDROOMS
- 2 BATHS



EWA



This plan may change depending on floor location.

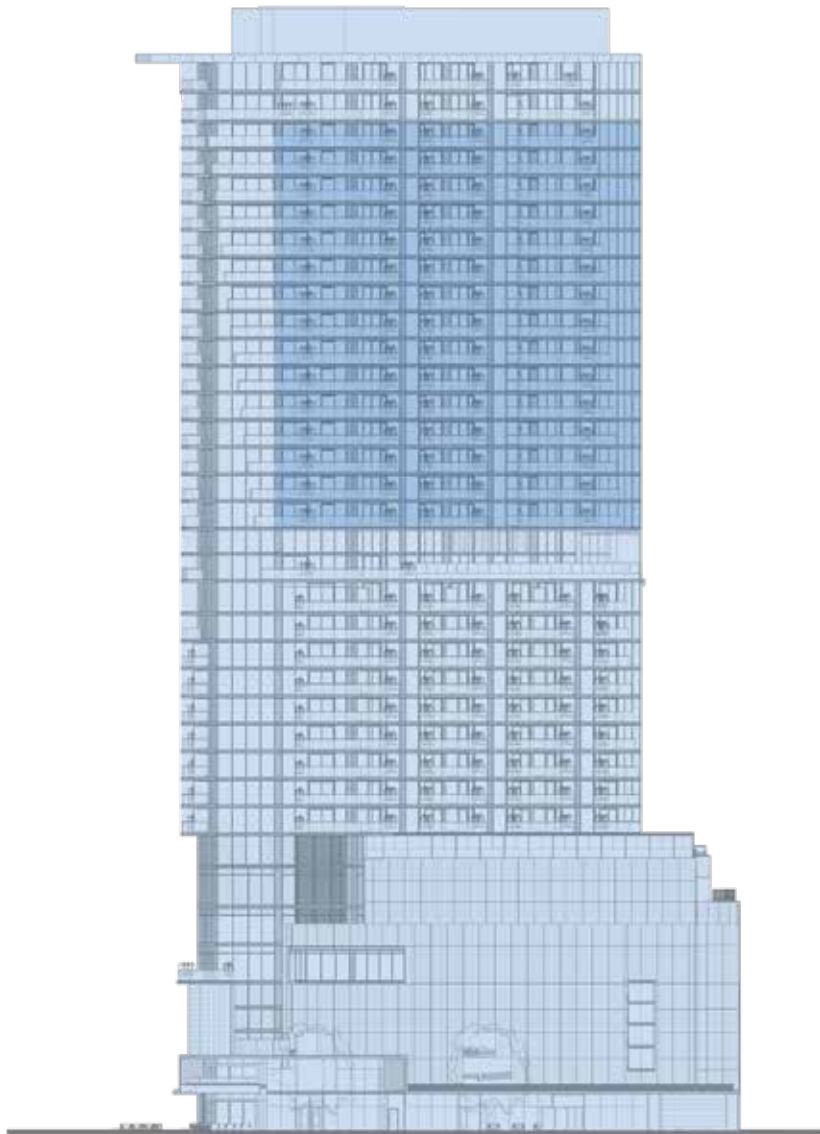


# Hale Ahe

Uniquely configured residences mirroring the organic, multi-faceted architecture of the tower, the *Hale Ahe* collection reveals exquisitely imagined interior spaces flowing freely from one into the next. The singular, open living environment is a sophisticated aesthetic designed to embrace the scenic Ko’olau mountain range and Diamond Head panoramas. An expansive lanai gracing nearly the entire length of each residence permits a luxuriant lifestyle open to warm sunshine and soft, tropical breezes.

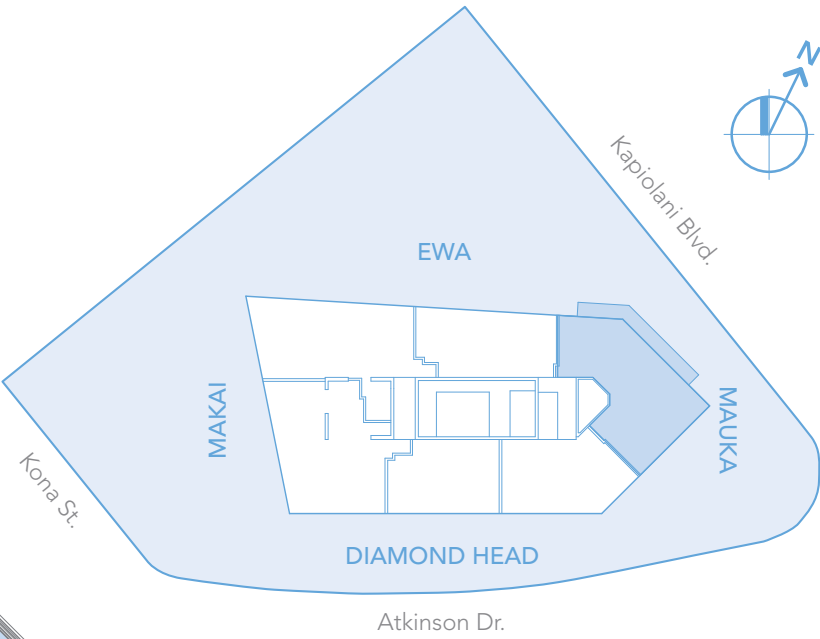
## FLOORS 22 – 36

2,478 – 2,583 TOTAL SQ. FT.  
LIVING AREA 2,140 – 2,144 SQ. FT.  
LANAI AREA 338 – 439 SQ. FT.  
3 BEDROOMS  
3.5 BATHS



MAUKA

This plan may change depending on floor location.

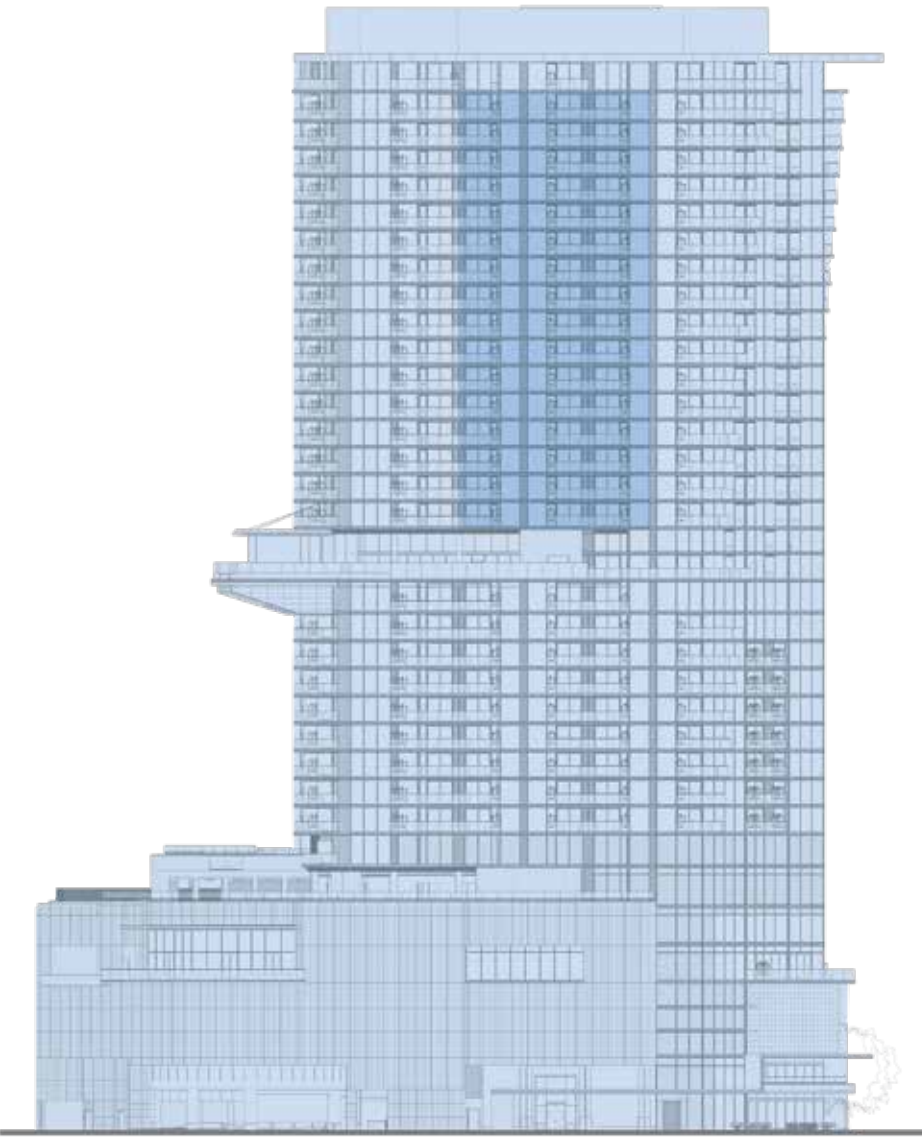


# Hale Malama

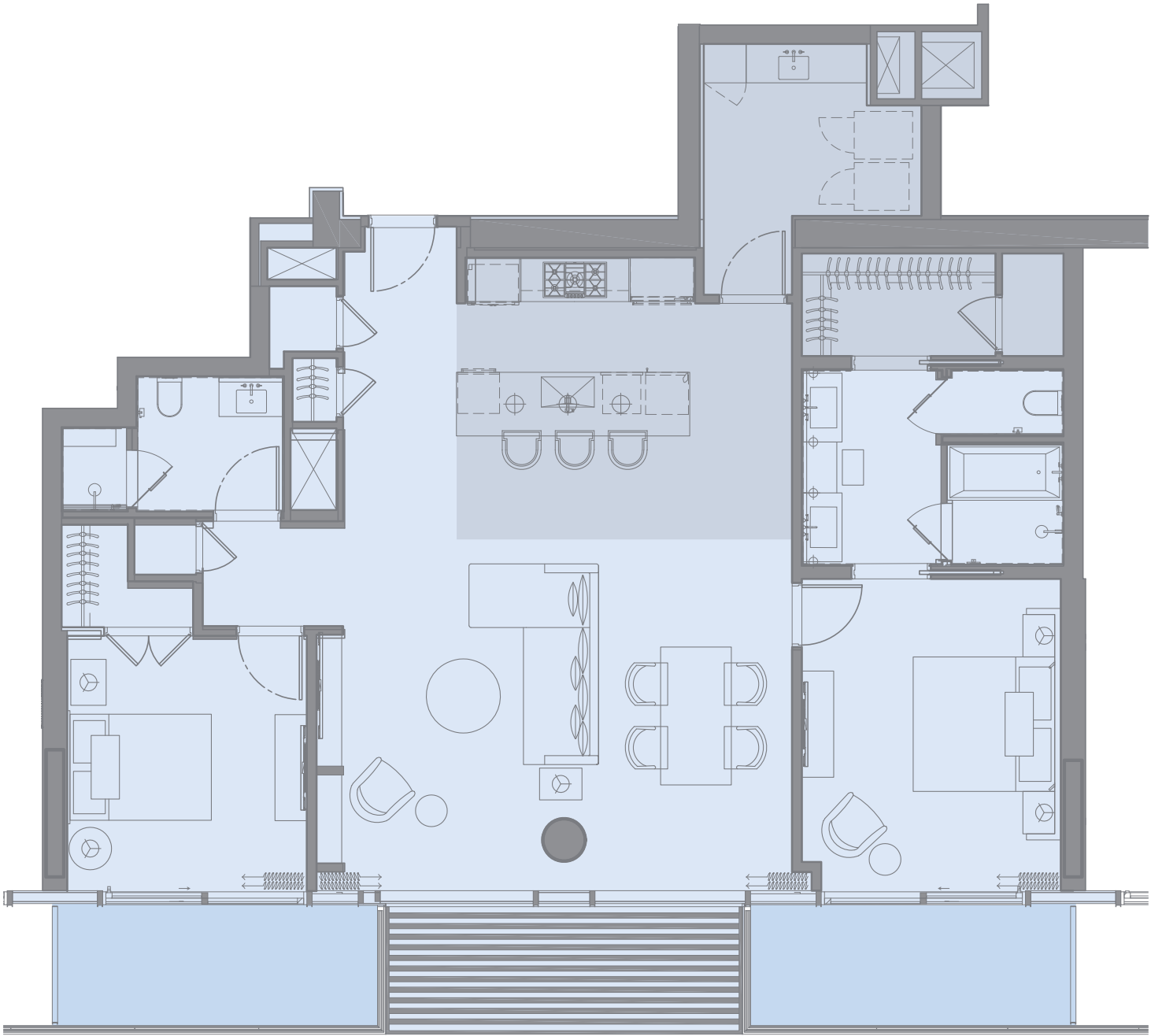
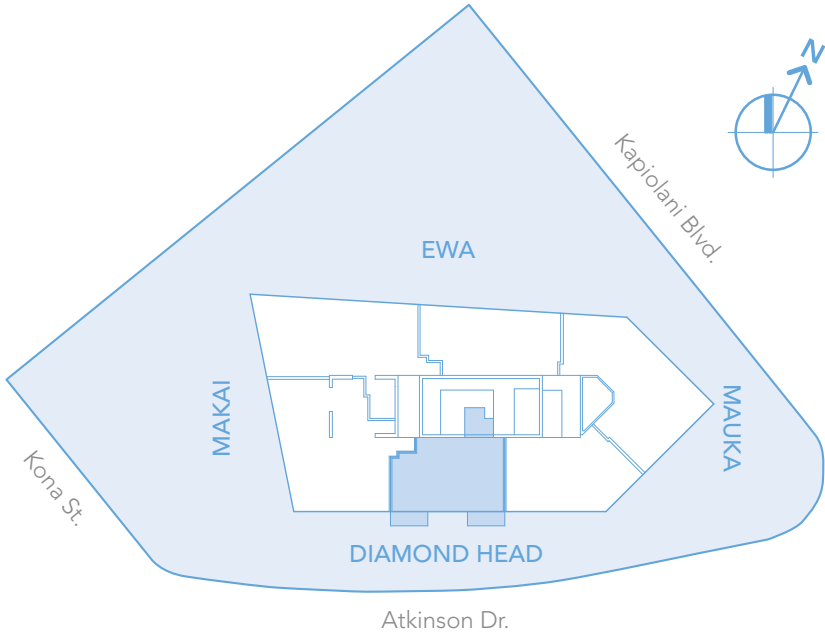
An exquisitely imagined design aesthetic reflecting the luxuriance and ease of island living define the limited collection of *Hale Malama Residences*. A singular, open setting merges the kitchen, living and dining spaces with nothing to detract from the views, which include spellbinding panoramas of the Pacific Ocean and Diamond Head. Each bedroom features its own private lanai, seamlessly inviting the outdoors in.

## FLOORS 22 – 37

1,539 – 1,635 TOTAL SQ. FT.  
LIVING AREA 1,361 – 1,457 SQ. FT.  
LANAI AREA 178 SQ. FT.  
2 BEDROOMS  
2 BATHS

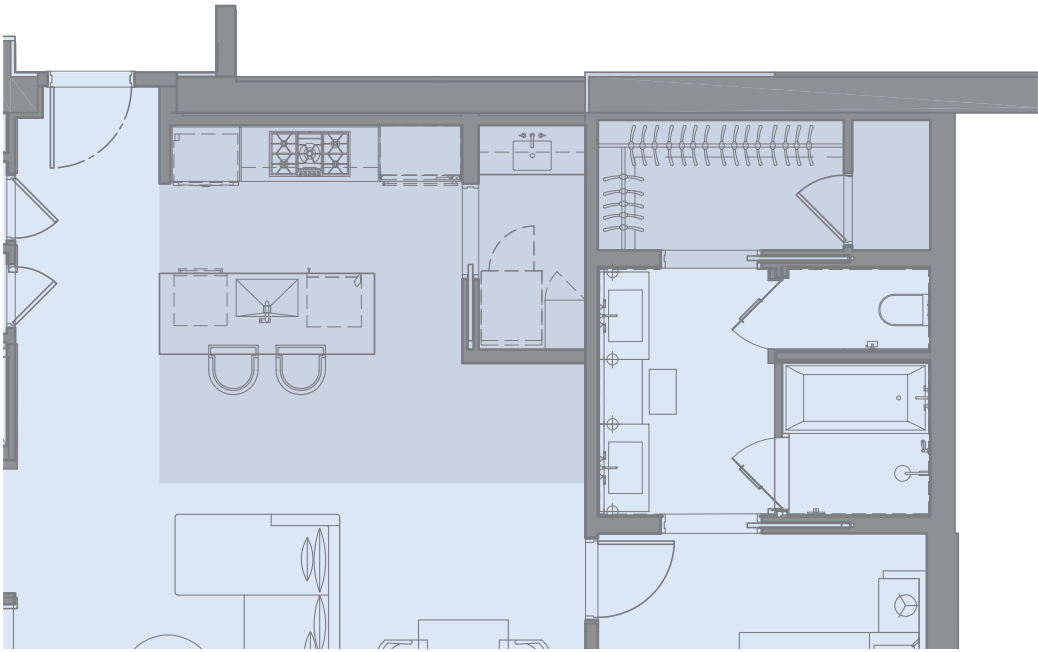


DIAMOND HEAD

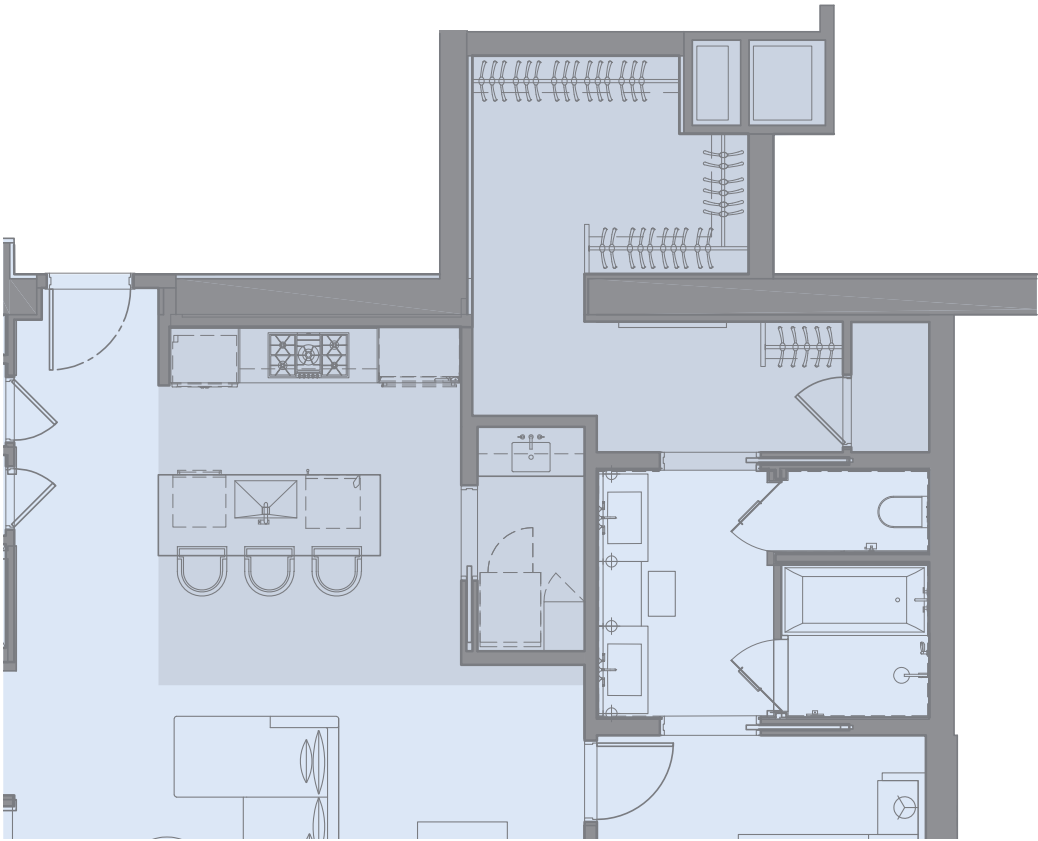


This plan may change depending on floor location

**TYPE 2**  
FLOOR 22  
LIVING AREA  
1361 SQ. FT



**TYPE 3**  
FLOOR 23  
LIVING AREA  
1456 SQ. FT



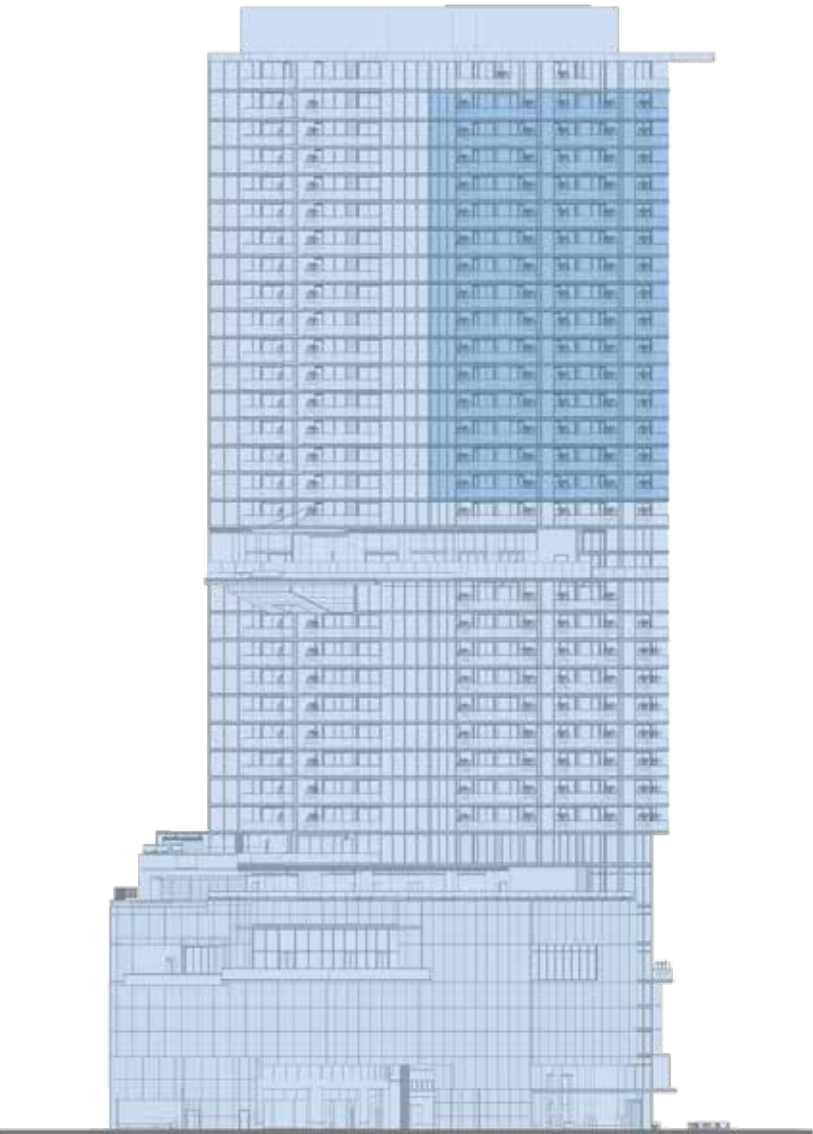


# Hale Moani

Gracing a desirable southeast corner of the tower on some of its uppermost floors, the *Hale Moani Residences* offer inspired living high above the cityscape. Luxuriously modern interiors are spacious and artfully composed, with floor-to-ceiling glass embracing natural light and affording commanding views of the Pacific Ocean and Honolulu Harbor. Two lanai balconies—one oriented to the south, the other facing east—are open to warm sunshine and soft, tropical breezes.

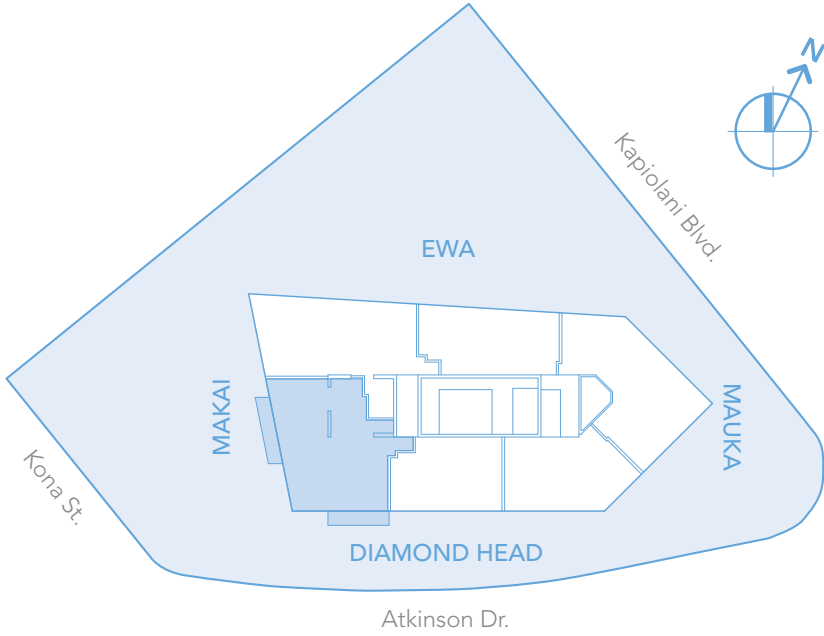
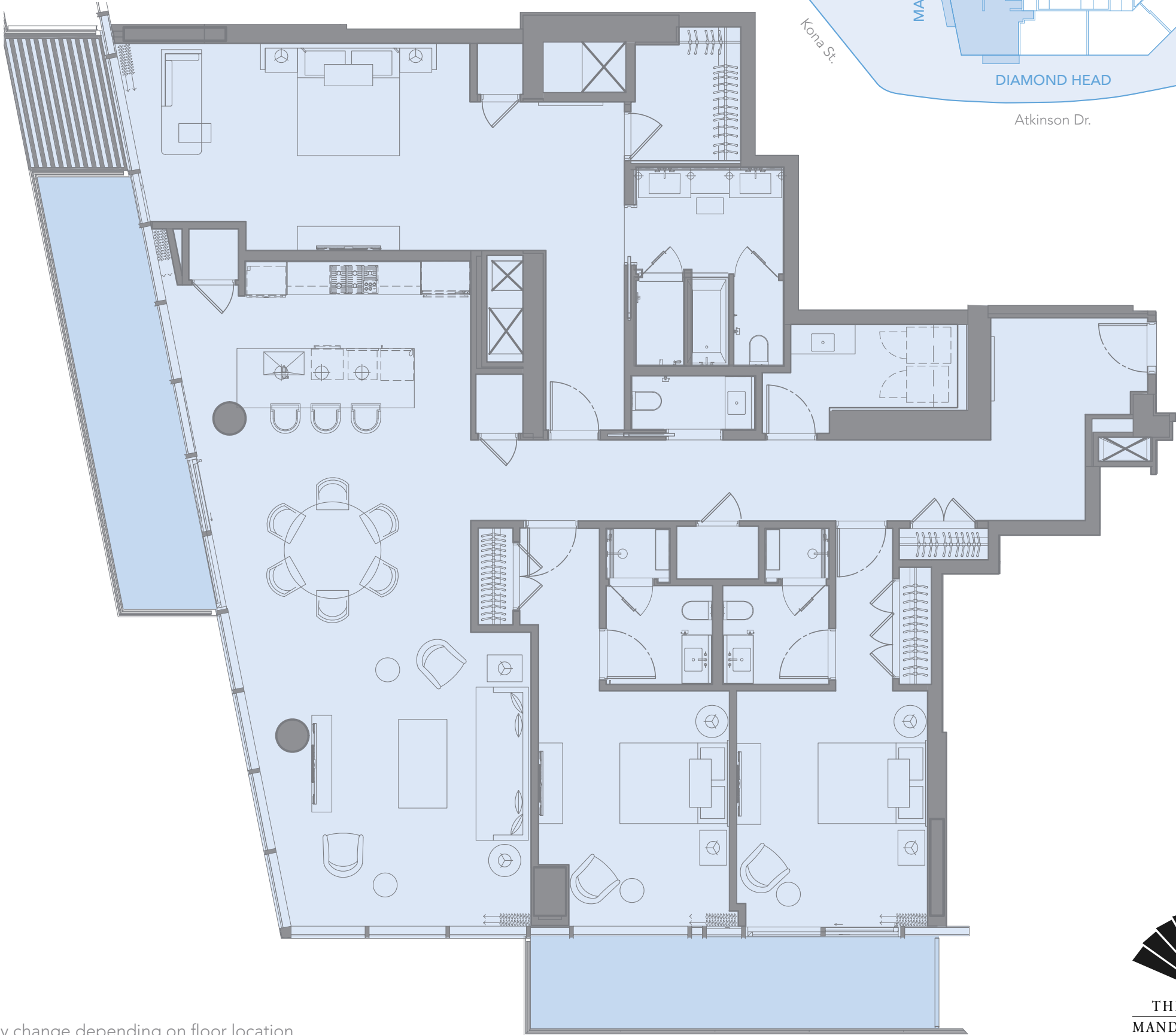
**FLOORS 23 – 37**

- 2,763 TOTAL SQ. FT.
- LIVING AREA 2,454 SQ. FT.
- LANAI AREA 309 SQ. FT.
- 3 BEDROOMS
- 3.5 BATHS



MAKAI

This plan may change depending on floor location.

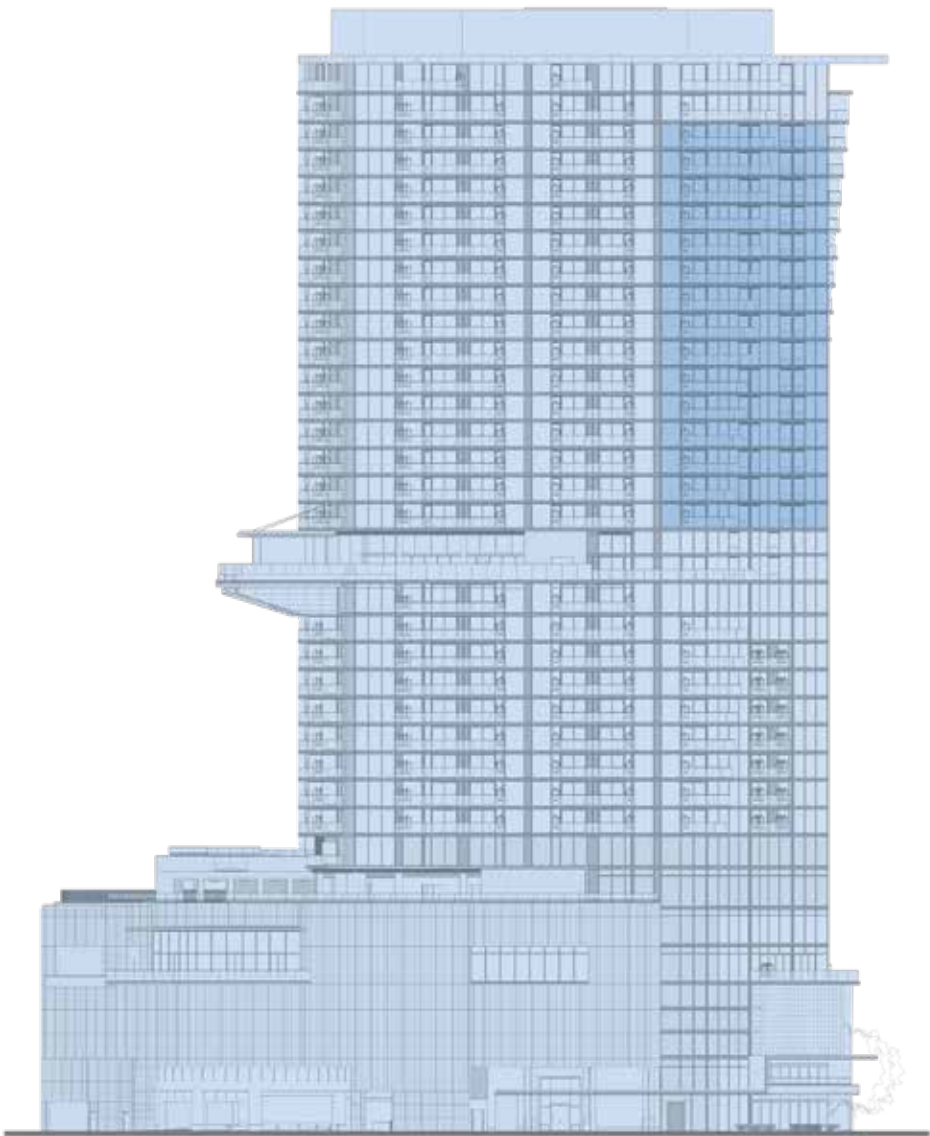


# Hale 'Ano

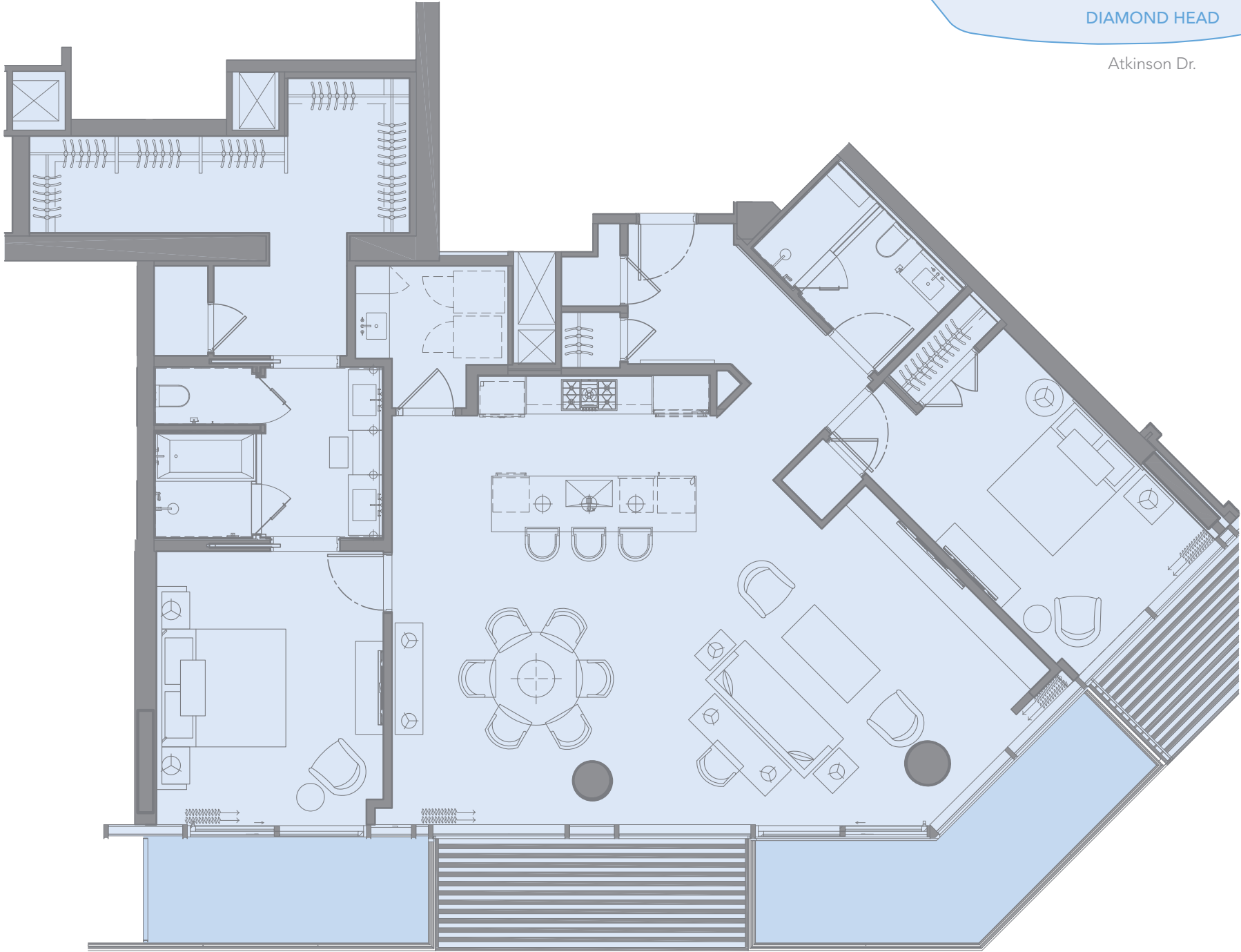
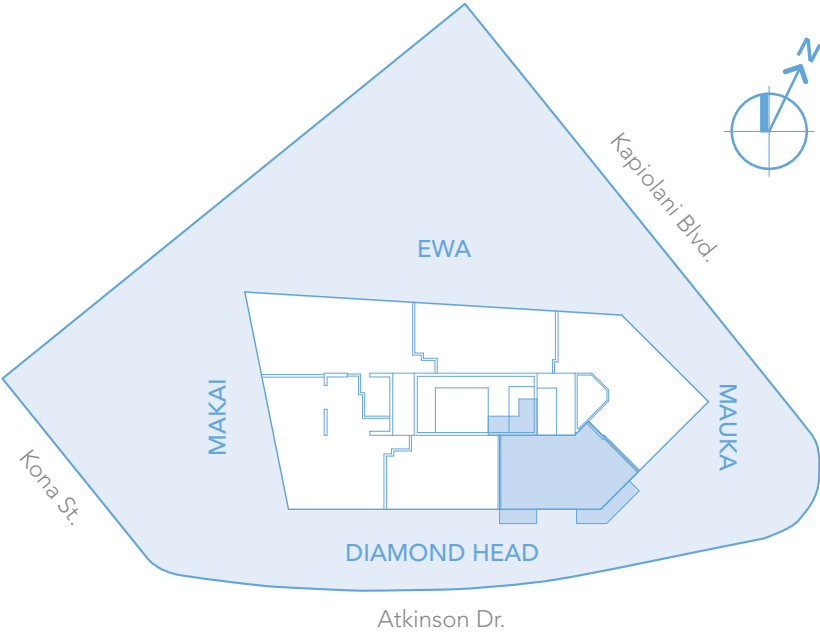
These uniquely configured residences, which mirror the organic, multi-faceted architecture of the tower, reveal exquisitely imagined interior spaces flowing freely from one into the next. The singular, open living environment is a sophisticated aesthetic designed to embrace the commanding Pacific Ocean and Diamond Head panoramas. Two lanai balconies—one off the master bedroom, one off the main living area—permit a luxuriant lifestyle open to warm sunshine and soft, tropical breezes.

## FLOORS 22 – 36

1,764 – 2,031 TOTAL SQ. FT.  
LIVING AREA 1,547 – 1,699 SQ. FT.  
LANAI AREA 217 – 332 SQ. FT.  
2 BEDROOMS  
2 BATHS



DIAMOND HEAD



This plan may change depending on floor location.

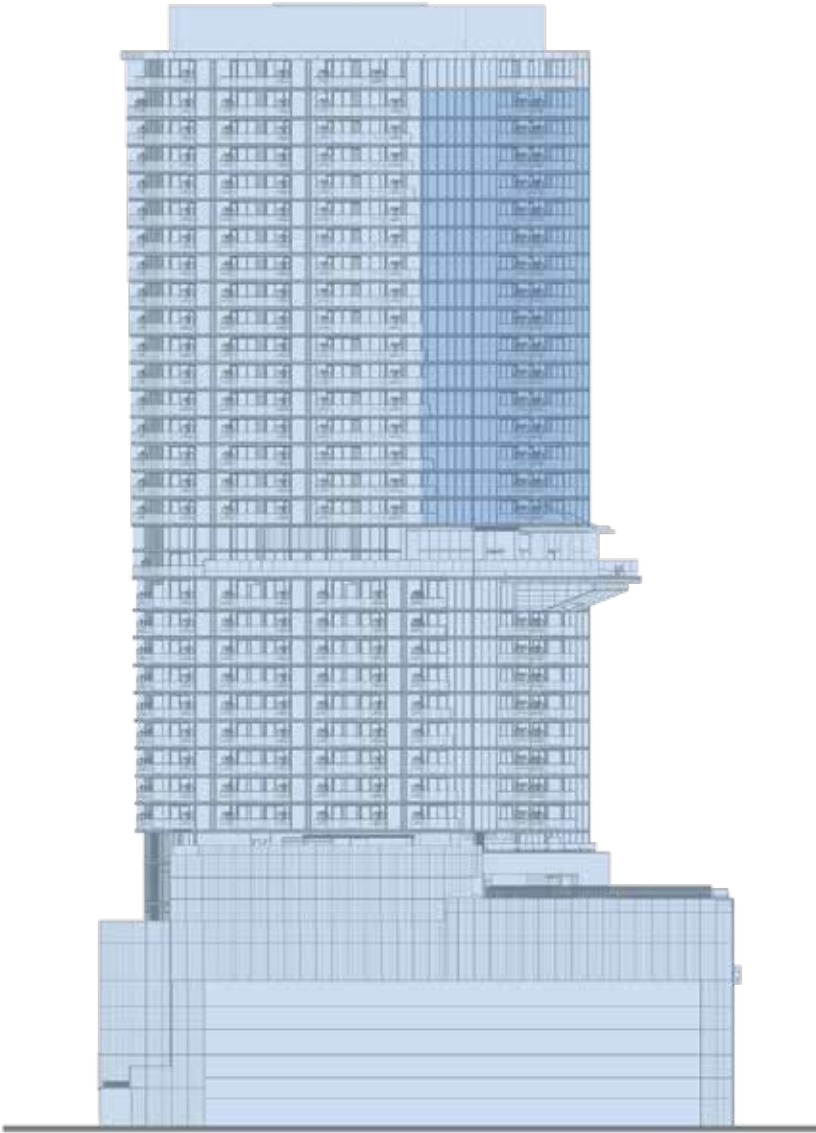


# Hale Nalu

Gracing a desirable southwest corner of the tower on some of its uppermost floors, the *Hale Nalu Residences* offer inspired living high above the cityscape. Luxuriously modern interiors are spacious and artfully composed, with floor-to-ceiling glass embracing natural light and affording commanding views of the Pacific Ocean, Honolulu Harbor and the Ko’olau Mountains. Two lanai balconies—one oriented to the south, the other facing west—are open to warm sunshine and soft, tropical breezes.

## FLOORS 22 – 37

2,696 – 2,776 TOTAL SQ. FT.  
LIVING AREA 2,355 – 2,424 SQ. FT.  
LANAI AREA 341 – 421 SQ. FT.  
3 BEDROOMS  
3.5 BATHS



EWA

This plan may change depending on floor location.

